

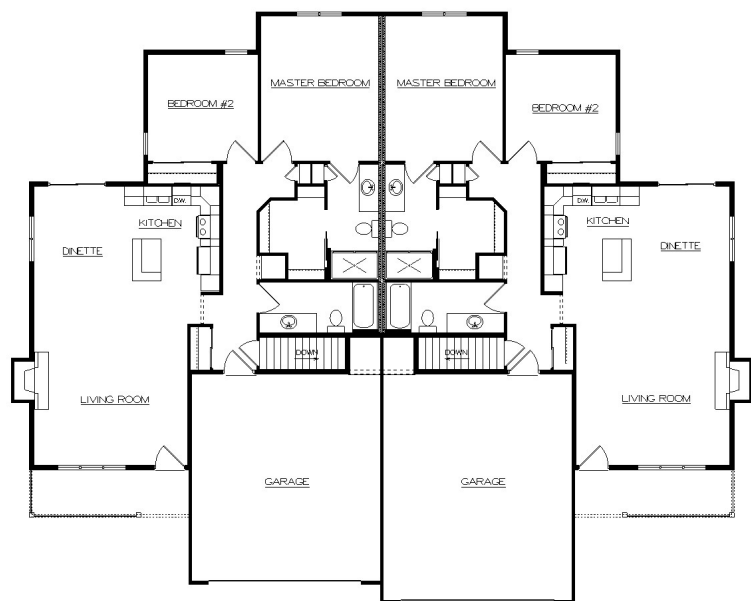
# The Barrington



## STANDARD DESIGN FEATURES

2 x 6 House Exterior w/ Tyvek Wrap  
 R-25 Exterior Warm Wall System  
 R-49 Blown Insul. in House Ceiling  
 Pella Vinyl Windows  
 Pella Vinyl Sliding Patio Doors  
 Raised Panel Front Doors  
 Raised Panel O.H. Garage Doors  
 Double Four Vinyl Siding  
 Aluminum Fascia & Soffit  
 Dimensional Roof Shingles  
 Concrete Driveway Allowance  
 Concrete Service Walk Allowance  
 Kohler/Sterling Plumbing Fixtures/Faucets  
 Molded Panel Doors and Painted Trim  
 Schlage Locksets  
 Norcraft Cabinets  
 Laminate Tri-Cove Countertops  
 Vanity Size Bathroom Mirrors  
 Quiet Wash Dishwashers  
 Microhood w/ Venting in Each Unit  
 Garbage Disposals w/ Connections  
 Ice Maker Line to Refrigerators  
 First Floor Laundry Hookups  
 Vanity Size Bathroom Mirrors  
 Bath Fans w/ Timers  
 Drywall - 3 Textures to Choose  
 Interior & Exterior Painting  
 Power Vent Water Heaters  
 High Efficiency Natural Gas Furnaces  
 Central Air Conditioning units  
 100 Amp Electric Services  
 Floor Covering Allowance  
 Light Fixture Allowance  
 Plumbing Lateral Allowance  
 Sand Backfill Allowance  
 Hauling Fill Allowance  
 Temporary Gravel Drive Allowance  
 Silt Fence Allowance  
 Focus on Energy Home

*\*Std. Features & Price Subject to Change*



### 1315 Sq. Ft. Each Unit

Living Room	16'x 18'
Kitchen	10'x 11'
Dinette	10'x 11'
MasterBdrm	12'x 15'
Bedroom #2	12'x 11'
Garage	20'x 22'

*Room sizes are approx.*

*Plan can be modified  
To meet your needs*



Sheboygan County's Largest Home Builder