

Eastern Pines

Village of Howards Grove

1	.45	N/A	23	.26	\$29,900*
2	.32	\$22,900**	24	.24	\$29,900
3	.28	SOLD	25	.24	\$29,900
4	.28	SOLD	26	.24	\$29,900*
5	.28	SOLD	27	.24	\$29,900
6	.28	SOLD	28	.24	\$25,900
7	.28	SOLD	29	.24	\$25,900
8	.28	SOLD	30	.24	\$25,900*
9	.28	\$25,900***	31	.24	\$25,900
10	.28	SOLD	32	.26	\$25,900
11	.32	SOLD	33	.27	\$32,900**
12	.51	\$37,900	34	.25	\$32,900*
13	.66	\$37,900	35	.25	\$32,900
14	.40	SOLD	36	.25	\$32,900
15	.30	\$32,900**	37	.25	\$32,900*
16	.27	\$32,900	38	.24	\$28,900
17	.27	\$32,900	39	.24	\$27,900*
18	.27	\$32,900	40	.24	\$27,900
19	.27	\$27,900	41	.28	\$27,900
20	.27	SOLD	42	.32	\$27,900**
21	.27	\$27,900	43	.41	\$32,900**
22	.30	\$27,900**			



- ◆ Covenants & Restrictions on File
- ◆ Most Lots Minimum 1,500 SF Ranch
- ◆ Some Lots are Minimum 1,300 SF Ranch
- ◆ Many Pre-Priced Floor Plans Available
- ◆ Village Sewer Lateral to Lot
- ◆ 30' Front & Rear Yard Setback
- ◆ 10' Side Yard Setback
- ◆ Lots Require Private Well
- ◆ Village has \$850 Park Fund, \$1,500 Sewer Connection Fee —By Buyer
- ◆ All Sales Subject to Buyer Entering into an Acceptable Building Contract with Werner Homes Prior to Closing on Lot
- ◆ All Sales Subject to Prior Offer and All Prices Subject to Change
- ◆ A/O = Accepted Offer

* 1,300 SF Minimum Ranch

** Zoned Duplex— Can Build as Single Family
1,000 SF Minimum Duplex Per Side
1,500 SF Minimum Ranch

*** Lot has Shared Well Agreement with Lot Next Door

Discover your
Possibilities with
Werner Homes

Come Visit Our Showroom!

SHOWROOM LOCATION

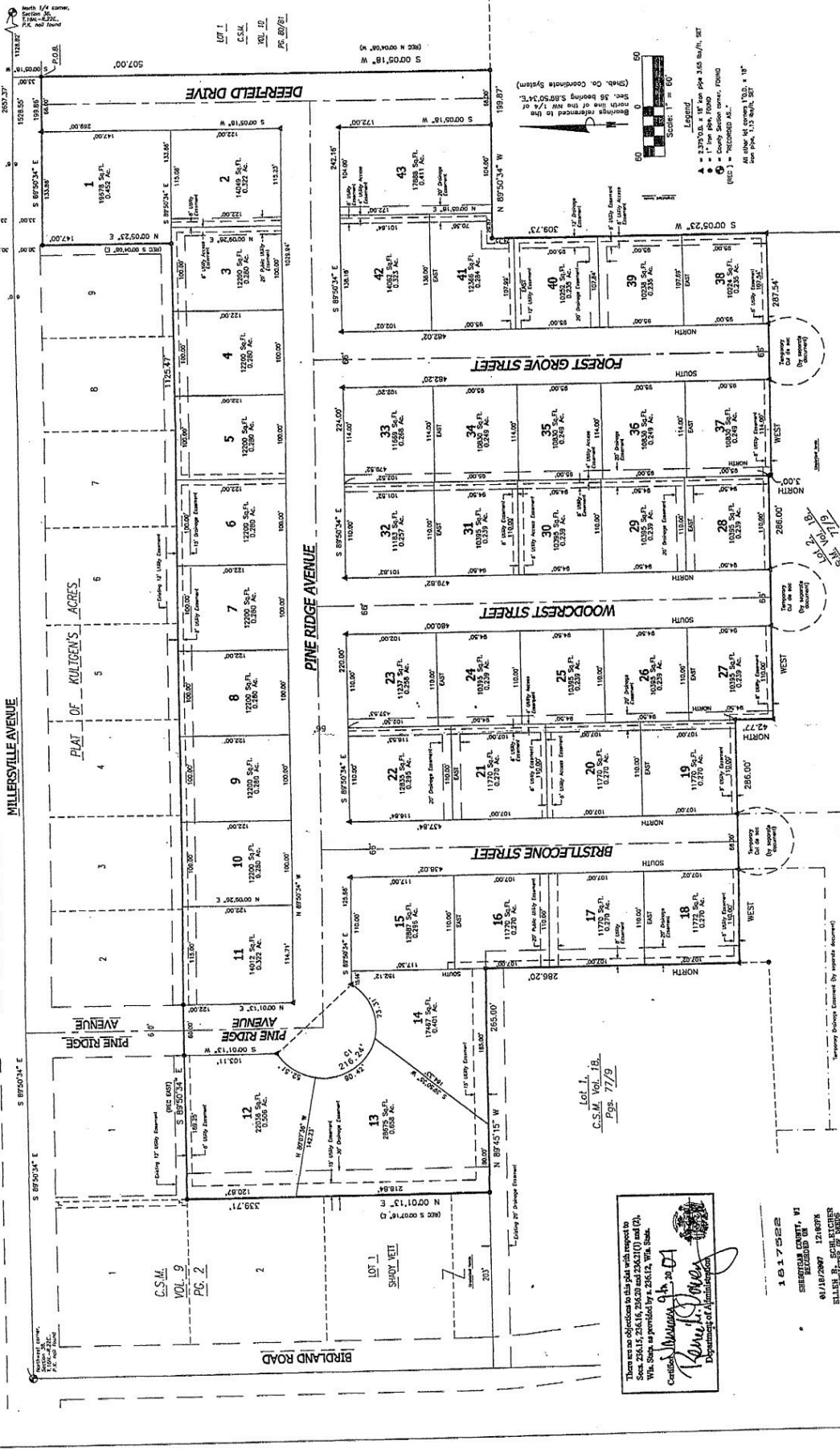
4539 South Taylor, Sheboygan

920-458-4104 WernerHomes.com

**WERNER
HOMES**

Sheboygan County's Largest Home Builder





EASTERN PINES SUBDIVISION

PART OF THE NW 1/4 OF THE NW 1/4 AND PART OF THE NE 1/4 OF THE NW 1/4, ALL IN SECTION 36, T.16N., R.22E., VILLAGE OF HOWARDS GROVE, SHEBOYGAN COUNTY, WISCONSIN

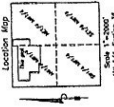


SHEET 1 OF 2



These are my Subdivisions to this plat with respect to Wisconsin Statutes Sections 89.01(1) and (2), Wis. Stats. as provided by s. 236.12, Wis. Stats.
 Certified *Robert J. Dancy* 04.20.07
 Department of Administration

1817522
 SHEBOYGAN COUNTY, WI
 RECORDER
 61107/2007 ECH SLOCHER
 BUILDING DEPARTMENT OF TAXES
 RECORDING FEE: \$8.88
 PLAT FEE:
 TAXES: P 00006



Revised 11/12/2007