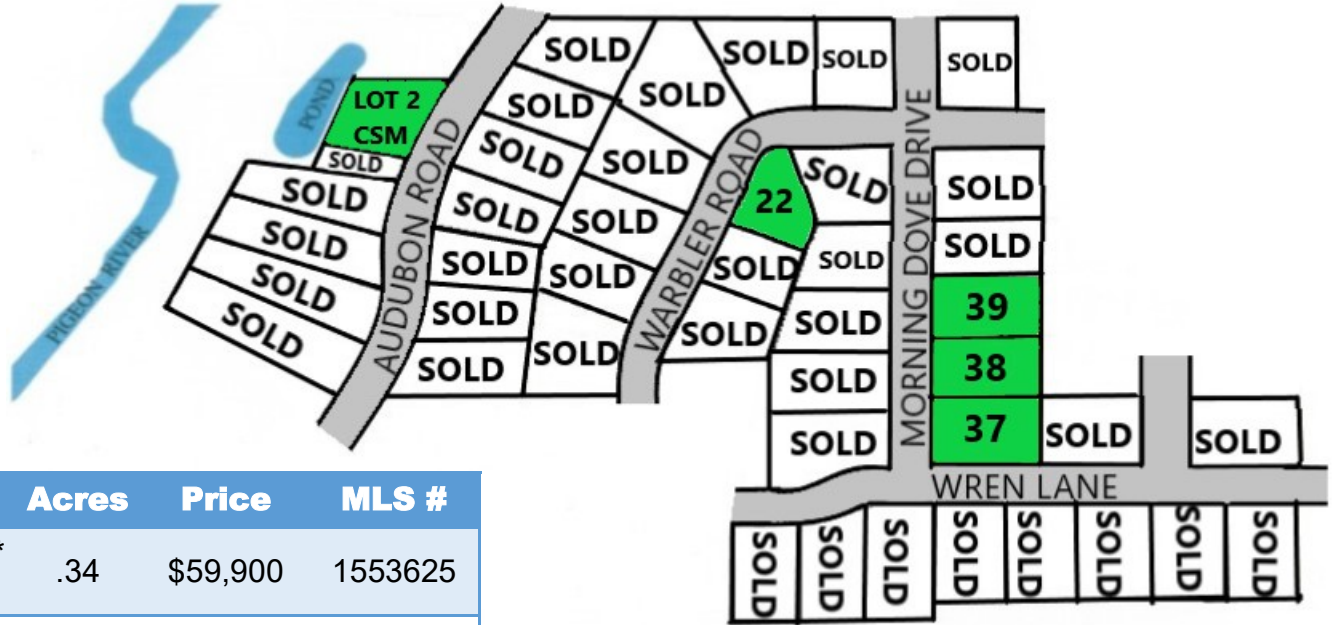




# Pigeon River Meadows Subdivision

*Village of Howards Grove*



LOT	Acres	Price	MLS #
LOT 2* CSM	.34	\$59,900	1553625
22	.29	\$43,900	1748182
37	.39	\$52,900	1553627
38	.33	\$45,900	1553617
39	.33	\$45,900	1553618

A/O—Accepted Offer

- Lots available with river access and walkout basement exposure
- Lots are fully improved with:
  - Paved roadway with curb & gutter
  - Sewer lateral to lot line
  - Gas and Electric to lot line
- Buyer to provide:
  - Well
  - Sewer Connection Fee \$ 1,500
  - Park Fee \$ 850
- Subdivision covenants and restrictions apply
- Lot #37 zoned for single family or two-family/duplex
- All builders are welcome
- All sales subject to availability
- Prices subject to change



**COLDWELL BANKER**  
WERNER & ASSOCIATES

4539 South Taylor Drive, Sheboygan, WI  
WWW.COLDWELLBANKER.COM  
(920)458-4103