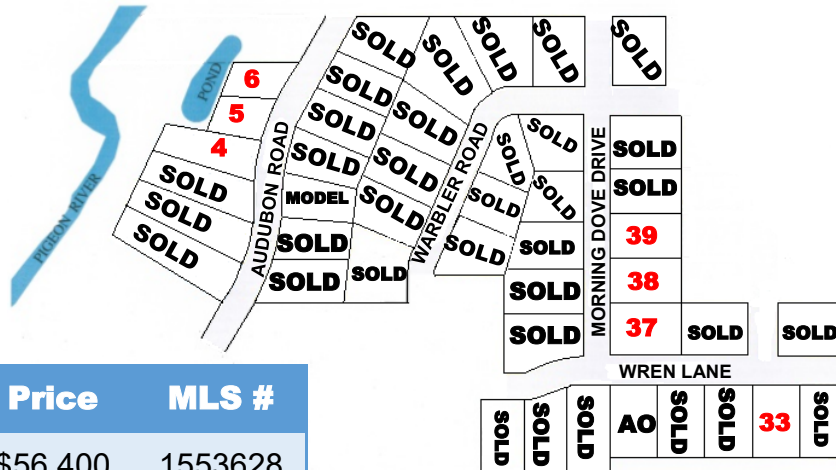




Pigeon River Meadows Subdivision

Village of Howards Grove



LOT	Acres	Price	MLS #
4*	.38	\$56,400	1553628
5*	.23	\$51,400	1553623
6*	.23	\$51,400	1553625
11	.23	\$43,500	MODEL
30	.35	A/O	1553619
33	.35	\$44,400	1553622
37	.39	\$51,400	1553627
38	.33	\$44,400	1553617
39	.33	\$44,400	1553618

- Lots available with river access and walkout basement exposure
- Lots are fully improved with:
 - Paved roadway with curb & gutter
 - Sewer lateral to lot line
 - Gas and Electric to lot line
- Buyer to provide:
 - Well
 - Sewer Connection Fee \$ 1,500
 - Park Fee \$ 850
- Subdivision covenants and restrictions apply
- Lot #37 zoned for single family or two-family/duplex
- All builders are welcome
- All sales subject to availability and prices subject to change

A/O—Accepted Offer

* Walkout Basement Exposure



COLDWELL BANKER
WERNER & ASSOCIATES

4539 South Taylor Drive, Sheboygan, WI
WWW.COLDWELLBANKER.COM
(920)458-4103

