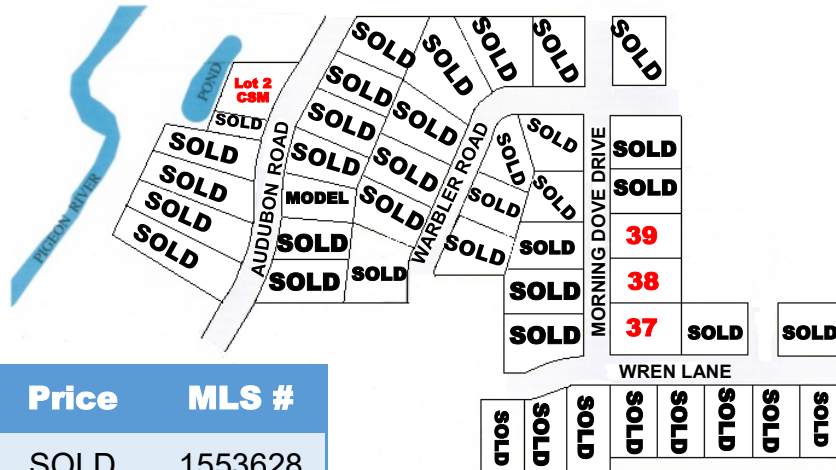




# Pigeon River Meadows Subdivision

Village of Howards Grove



LOT	Acres	Price	MLS #
4*	.38	SOLD	1553628
5*	.23	SOLD	1553623
LOT 2* CSM	.34	\$59,900	1553625
11	.23	SOLD	1553616
30	.35	SOLD	1553619
33	.35	SOLD	1553622
37	.39	\$52,900	1553627
38	.33	\$45,900	1553617
39	.33	\$45,900	1553618

- Lots available with river access and walkout basement exposure
- Lots are fully improved with:
  - Paved roadway with curb & gutter
  - Sewer lateral to lot line
  - Gas and Electric to lot line
- Buyer to provide:
  - Well
  - Sewer Connection Fee \$ 1,500
  - Park Fee \$ 850
- Subdivision covenants and restrictions apply
- Lot #37 zoned for single family or two-family/duplex
- All builders are welcome
- All sales subject to availability and prices subject to change

A/O—Accepted Offer

\* Walkout Basement Exposure



**COLDWELL BANKER**  
WERNER & ASSOCIATES

4539 South Taylor Drive, Sheboygan, WI  
WWW.COLDWELLBANKER.COM  
(920)458-4103

