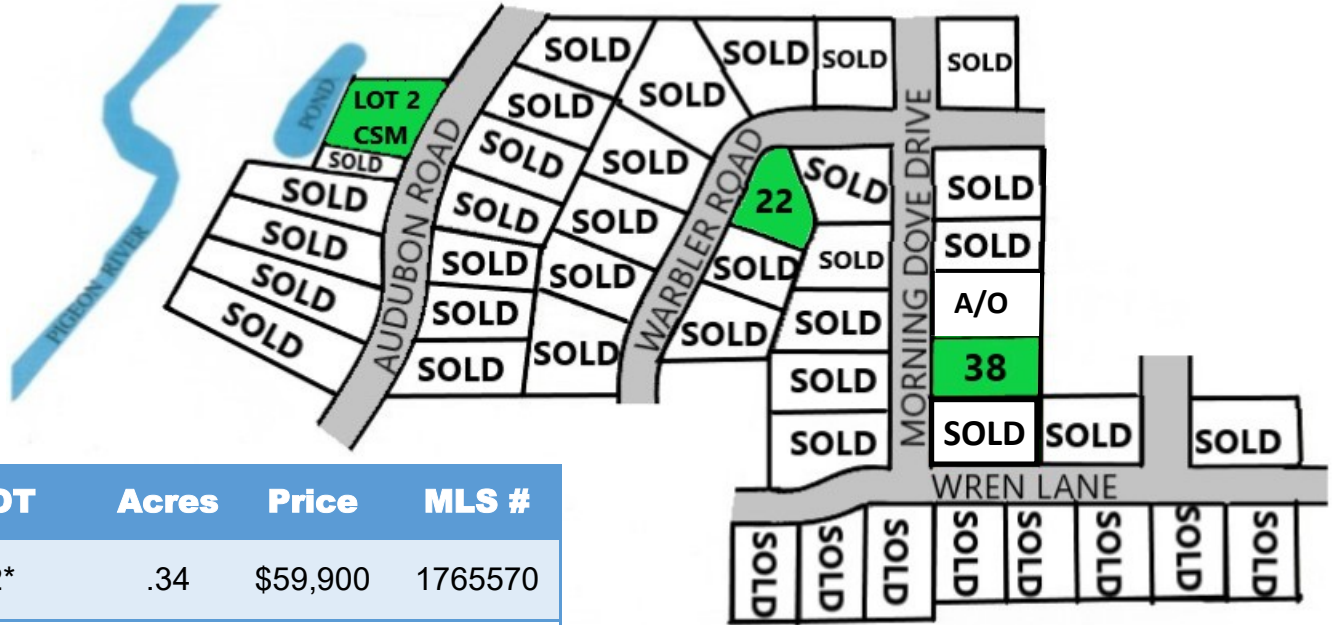




Pigeon River Meadows Subdivision

Village of Howards Grove



LOT	Acres	Price	MLS #
2*	.34	\$59,900	1765570
22	.29	\$43,900	1748182
38	.31	\$45,900	1765571
39	.31	A/O	1765573

A/O—Accepted Offer

* Walkout Basement Exposure

- Lots available with river access and walkout basement exposure
- Lots are fully improved with:
 - Paved roadway with curb & gutter
 - Sewer lateral to lot line
 - Gas and Electric to lot line
- Buyer to provide:
 - Well
 - Sewer Connection Fee \$ 1,500
 - Park Fee \$ 850
- Subdivision covenants and restrictions apply
- All builders are welcome
- All sales subject to availability
- Prices subject to change



COLDWELL BANKER
WERNER & ASSOCIATES

4539 South Taylor Drive, Sheboygan, WI
WWW.COLDWELLBANKER.COM
(920)458-4103