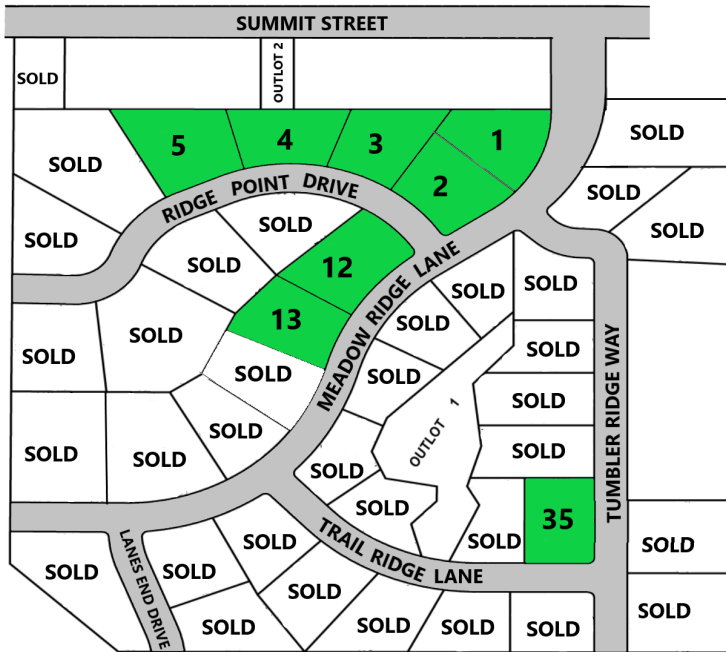


Tumbler Ridge

City of Plymouth



- Scenic Views
- Generous Sized Lots
- Partial Basement Exposure Available
- City Sewer & Water
- Buyer to Provide:
 - Sewer Connection Fee \$ 250
 - Future City Sidewalk
- Lots are Fully Improved with Paved Roadway
- Minimum Square Footage:
 - Lots 1, 2, 12, 13 & 35
 - 1,700 Sq. Ft. Ranch
 - 2,100 Sq. Ft. Two Story Total with 1,100 Sq. Ft. Main Floor
 - Lots 3, 4 & 5
 - 1,900 Sq. Ft. Ranch
 - 2,300 Sq. Ft. Two Story Total with 1,200 Sq. Ft. Main Floor
- Subdivision Covenants and Restrictions Apply
- All Sales Subject to Availability
- Prices Subject to Change
- All Builders Welcome

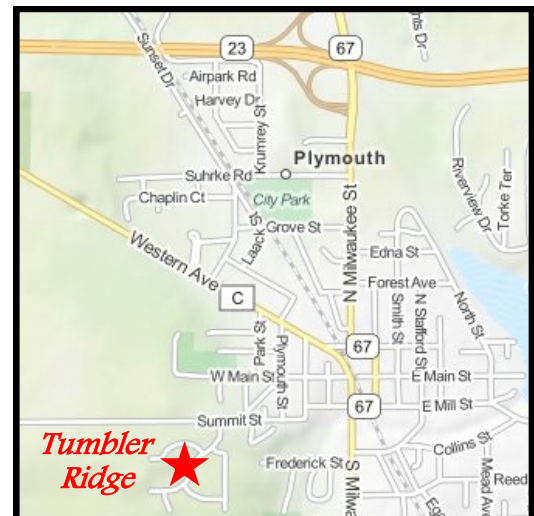
For More Info Visit:

www.TumblerRidge.info

Lot #	Acres	Price	MLS #
1	.54	\$32,900	1232408
2	.57	\$36,900	1232410
3	.53	\$52,900	1232413
4	.77	\$49,900	1232414
5	.67	\$54,900	1232416
12	.63	\$39,900	1232425
13	.56	\$45,900	1232426
35	.52	\$39,900	1232458

4' Side Exposure - Lot 3

\$5,000 Sidewalk Credit - Lots 2, 12, & 35



COLDWELL BANKER
WERNER & ASSOCIATES

4539 South Taylor Drive, Sheboygan, WI
WWW.COLDWELLBANKER.COM
 (920) 458-4103