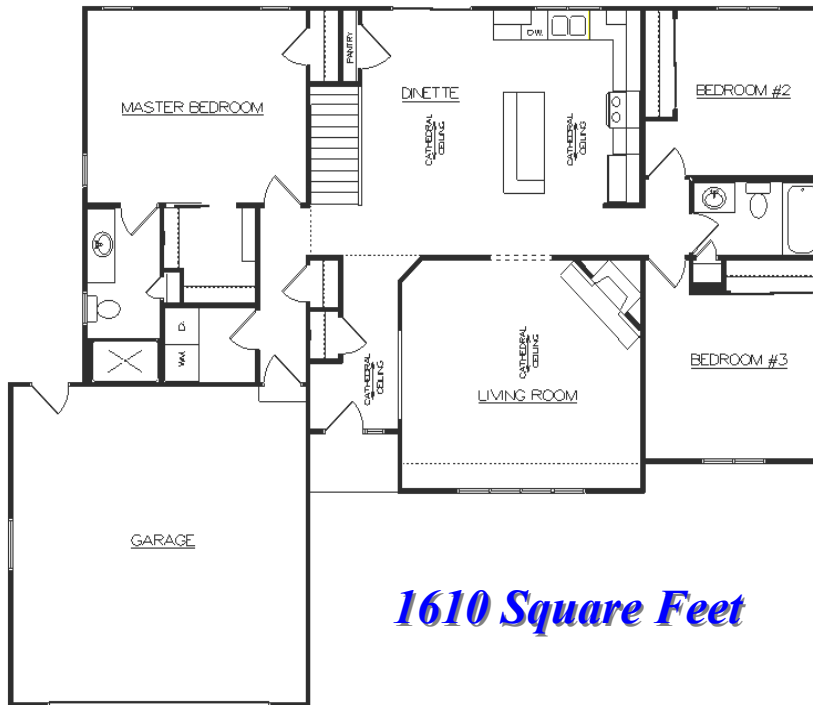




# ***Birchwood***



## ***Room Dimensions***

<i><b>Living Room</b></i>	<i><b>17'x 16'</b></i>
<i><b>Kitchen</b></i>	<i><b>10'x 13'</b></i>
<i><b>Dinette</b></i>	<i><b>11'x 13'</b></i>
<i><b>Master Bdrm</b></i>	<i><b>16'x 13'</b></i>
<i><b>Bedroom #2</b></i>	<i><b>10'x 11'</b></i>
<i><b>Bedroom #3</b></i>	<i><b>13'x 11'</b></i>
<i><b>Garage</b></i>	<i><b>22'x 22'</b></i>

***Plan Can Be Modified  
To Meet Your Needs***

***1610 Square Feet***

## ***Standard Birchwood Design Features***

***Double Four Vinyl Siding  
Cedar Trim: Windows/OH Door  
Fypon Half Circle: Lvng Rm Window  
Aluminum Fascia & Soffits  
Andersen Vinyl Clad Windows  
6 Panel Steel Front Door w/ Sidelite  
Raised Panel O.H. Garage Door  
Overhead Garage Door Opener  
6' Sliding Wood Patio Door  
450 S.F. Concrete Drive (18 x 25)  
25' x 4' Concrete Service Walk  
2 x 6 Construction with Tyvek  
R-24 Warm Wall System  
R-49 Blown Insul. in House Ceiling***

***Cathedral Ceiling - Foyer, Living Room  
Cathedral Ceiling - Kitchen & Dinette  
Flush Oak Doors and Oak Trim Pkg.  
Kentwood Oak Cabinets Throughout  
Wall Cabinet/Pole Above Washer/Dryer  
Crown Molding-Kitchen & Utility Room  
Kitchen Work Island -Snack Counter  
Trash/ Recycling Combo Base Cabinet  
Quiet Wash Dishwasher & Disposal  
Kenmore Micro-Hood with Venting  
Ice Maker Line to Refrigerator  
Vanity Size Bathroom Mirrors  
Kohler Plumbing Fixtures & Faucets  
40 Gallon Natural Gas Water Heater***

***Interior Painting & Staining  
Brick Gas Fireplace / Oak Mantel  
High Efficiency Nat. Gas Furnace  
Central Air Conditioning  
200 Amp Electric Service  
Seven Recessed Ceiling Lights  
\$6200 Floor Covering Allowance  
\$1200 Sand Backfill Allowance  
\$750 Light Fixture Allowance  
\$1400 Hauling Fill Allowance  
\$2200 Plbg. Lateral Allowance  
\$700 Gravel Drive Allowance  
\$175 Silt Fence Allowance  
Std. Features Subject to Change***



# ***Werner Homes***

4539 South Taylor Drive, Sheboygan 458-4104 [wernerhomes@wernerhomes.com](mailto:wernerhomes@wernerhomes.com)

