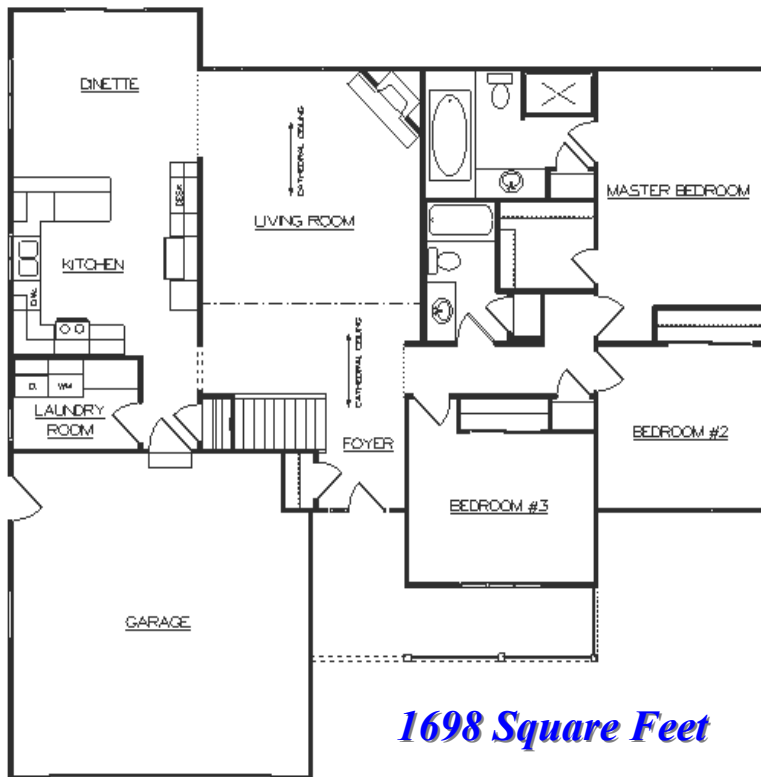


# Coventry



**1698 Square Feet**

## Room Dimensions

Living Room	16'x 19'
Kitchen	13'x 11'
Dinette	13'x 12'
Master Bdrm	12'x 16'
Bedroom #2	12'x 11'
Bedroom #3	13'x 10'
Garage	22'x 22'

*Plan Can Be Modified  
To Meet Your Needs*

## Standard Coventry Design Features

Double Four Vinyl Siding  
 Cedar Posts/Spindles - Porch  
 Vinyl Shutters on Front Windows  
 Aluminum Fascia & Soffits  
 Andersen Vinyl Clad Windows  
 6 Panel Steel Front Door w/ Sidelite  
 Raised Panel O.H. Garage Door  
 Overhead Garage Door Opener  
 6' Sliding Wood Patio Door  
 450 S.F. Concrete Drive (18 x 25)  
 25' x 4' Concrete Service Walk  
 2 x 6 Construction with Tyvek  
 R-24 Warm Wall System  
 R-49 Blown Insul. in House Ceiling

Cathedral Ceiling - Foyer, Living Room  
 Open Staircase to Lower Level  
 Flush Oak Doors and Oak Trim Pkg.  
 Oakridge Cabinets Throughout  
 Wall Cabinet/Pole Above Washer/Dryer  
 Crown Molding-Kitchen & Utility Room  
 Trash/ Recycling Combo Base Cabinet  
 Kenmore Quiet Wash Dishwasher  
 Kenmore Micro-Hood with Venting  
 Badger 5 Garbage Disposal  
 Ice Maker Line to Refrigerator  
 Vanity Size Bathroom Mirrors  
 Kohler Plumbing Fixtures & Faucets  
 50 Gallon Natural Gas Water Heater

Interior Painting & Staining  
 Brick Gas Fireplace / Oak Mantel  
 High Efficiency Nat. Gas Furnace  
 Central Air Conditioning  
 200 Amp Electric Service  
 \$6500 Floor Covering Allowance  
 \$1200 Master Tub Tile Allowance  
 \$1400 Sand Backfill Allowance  
 \$750 Light Fixture Allowance  
 \$1400 Hauling Fill Allowance  
 \$2200 Plbg. Lateral Allowance  
 \$700 Gravel Drive Allowance  
 \$175 Silt Fence Allowance  
 Std. Features Subject to Change



# Werner Homes

4539 South Taylor Drive, Sheboygan 458-4104 [wernerhomes@wernerhomes.com](mailto:wernerhomes@wernerhomes.com)

