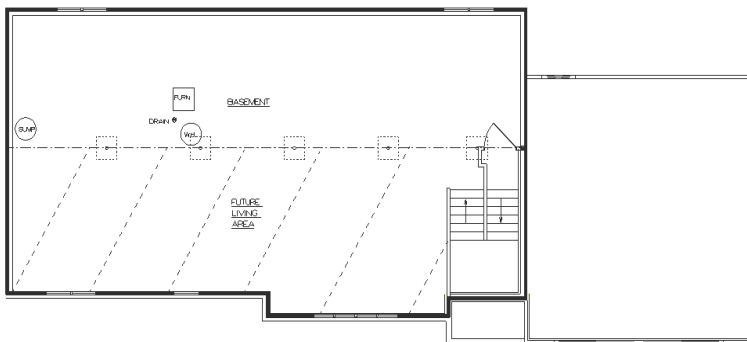


# The Glendale

## STANDARD DESIGN FEATURES



**Double Four Vinyl Siding**  
**One Pair of Vinyl Shutters**  
**6 x 6 Cedar Post - Front Stoop**  
**Aluminum Fascia & Soffits**  
**Andersen Casement Windows**  
**Six Panel Insulated Steel Front Door**  
**Raised Panel Insulated O.H. Garage Door**  
**O.H. Garage Door Opener w/ 2 Remotes**  
**6' Sliding Wood Patio Door**  
**450 S.F. Concrete Drive (18 x 25)**  
**9' x 4' Concrete Service Walk**  
**Three Tab Roof Shingles**  
**R-21 Warm Wall Construction w/House Wrap**  
**BIBS Insulation System w/ Optima**  
**R-44 Blown Insulation in House Ceiling**  
**Cathedral Ceiling-Living Rm, Dinette, Kitchen**  
**4' Basement Exposure w/ Windows**  
**Flush Oak Doors and Oak Trim Package**  
**Mid Continent Oak Cabinets Throughout**  
**Crown Molding - Kitchen Cabinets**  
**Trash / Recycling Combo Base Cabinet**  
**Snack Counter - Kitchen**  
**Quiet Wash Dishwasher**  
**Garbage Disposal**  
**Micro-Hood with Venting**  
**Ice Maker Line to Refrigerator**  
**Vanity Size Bathroom Mirrors**  
**Complete Painting & Staining of Interior**  
**Kohler Plumbing Fixtures & Faucets**  
**40 Gallon Natural Gas Water Heater**  
**High Efficiency Nat. Gas Furnace**  
**Central Air Conditioning**  
**200 Amp Electric Service**  
**\$5400 Floor Covering Allowance**  
**\$600 Light Fixture Allowance**  
**\$2200 Plumbing Lateral Allowance**  
**\$1200 Sand Backfill Allowance**  
**\$1400 Hauling Excess Fill Allowance**  
**\$700 Gravel Base for Driveway Allowance**  
**\$175 Silt Fence Allowance**

### 1336 Square Feet

<b>Living Room</b>	<b>17'x15'</b>	<b>Kitchen</b>	<b>12 x 12</b>
<b>Master Bdrm</b>	<b>15 x 12'</b>	<b>Dinette</b>	<b>11'x 12'</b>
<b>Bedroom #2</b>	<b>12'x 10'</b>	<b>Laundry</b>	<b>6 x 10</b>
<b>Garage</b>	<b>22'x 24'</b>		

# Werner Homes

4539 South Taylor Drive, Sheboygan, 458-4104 [wernerhomes@wernerhomes.com](mailto:wernerhomes@wernerhomes.com)