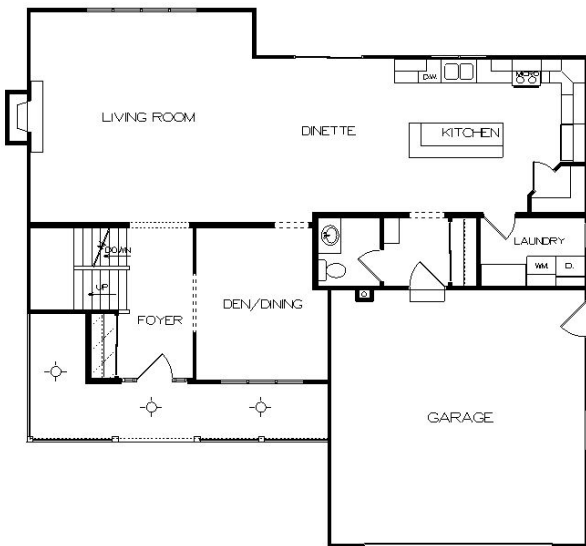
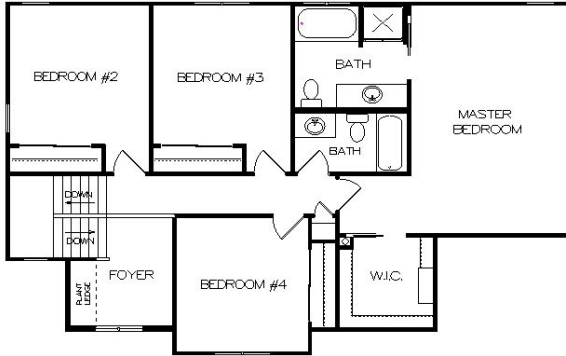




# The Lancaster

## STANDARD DESIGN FEATURES



### 2325 Square Feet

<i>Living Room</i>	<i>19'x 18'</i>	<i>Master Bdrm</i>	<i>13'x 19'</i>
<i>Kitchen</i>	<i>16'x 13'</i>	<i>Bedroom #2</i>	<i>12'x 12'</i>
<i>Dinette</i>	<i>12'x 13'</i>	<i>Bedroom #3</i>	<i>12'x 12'</i>
<i>Garage</i>	<i>22'x 22'</i>	<i>Bedroom #4</i>	<i>11'x 11'</i>

*Double Four Vinyl Siding*  
*Aluminum Fascia & Soffits*  
*Andersen Vinyl Clad Windows*  
*6 Panel Steel Front Door With Two Sidelites*  
*Raised Panel Insulated O.H. Garage Door*  
*O.H. Garage Door Opener w/ 2 Remotes*  
*6' Sliding Wood Patio Door*  
*Three Tab Roof Shingles*  
*450 SF Concrete Drive (18 x 25)*  
*28' x 4' Concrete Service Walk*  
*21' x 5' w/Wraparound Concrete Front Stoop*  
*2 x 6 Construction with Tyvek House Wrap*  
*R-24 Warm Wall System, R-49 Blown Ceiling*  
*Two Story Foyer with View From 2nd Floor*  
*Plant Ledge Over Front Hall Closet*  
*Half Wall with Oak Cap on Staircase*  
*Brick Gas Fireplace with Oak Mantle*  
*Oakridge Cabinets Throughout*  
*Crown Molding Above Wall Cabinets*  
*Large Work Island in Kitchen*  
*Wall Cabinets & Counter in Laundry*  
*Quiet Wash Dishwasher & Garbage Disposal*  
*Ice Maker Line to Refrigerator*  
*Kenmore Micro-Hood with Venting*  
*Complete Painting & Staining of Interior*  
*Kohler Plumbing Fixtures & Faucets*  
*Kohler Whirlpool Tub in Master Bath*  
*Kohler Shower Door in Master Bath*  
*50 Gallon Nat. Gas Water Heater*  
*200 Amp Electric Service*  
*High Efficiency Nat. Gas Furnace*  
*Central Air Conditioning*  
*\$9000 Floor Covering Allowance*  
*\$750 Tub Tile Allowance for Master Bath*  
*\$1200 Light Fixture Allowance*  
*\$2200 Plumbing Lateral Allowance*  
*\$1400 Sand Backfill Allowance*  
*\$1400 Hauling Excess Fill Allowance*  
*\$700 Gravel Base for Drive Allowance*  
*\$175 Silt Fence Allowance*

# Werner Homes

4539 South Taylor Drive, Sheboygan 458-4104 [wernerhomes@wernerhomes.com](mailto:wernerhomes@wernerhomes.com)