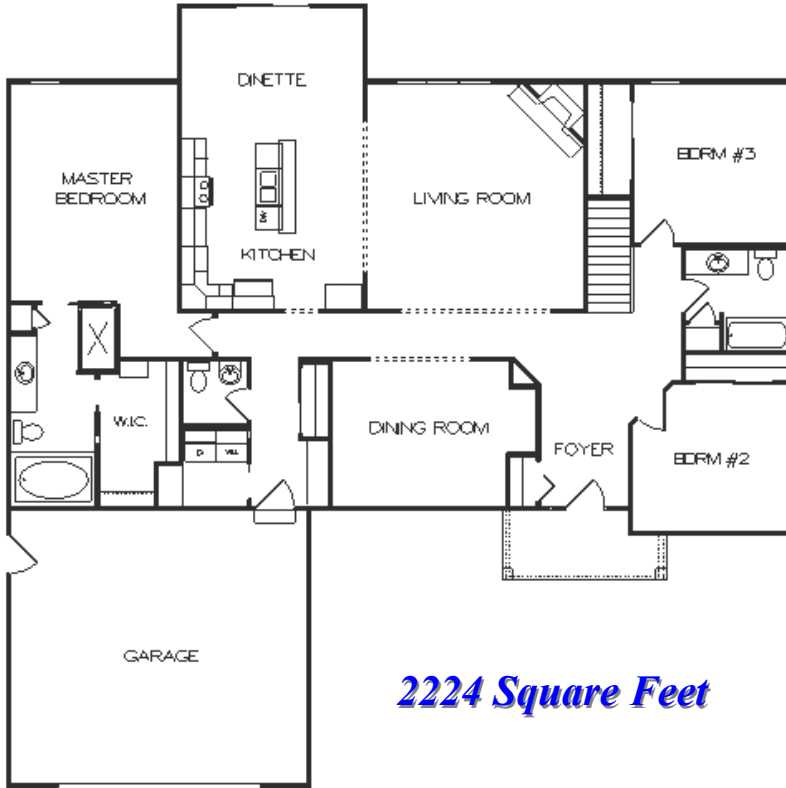


Prairieview



2224 Square Feet

Room Dimensions

Living Room	17'x 18'
Kitchen	14'x 13'
Dinette	14'x 11'
Dining Room	14' x 11'
Master Bdrm	13'x 17'
Bedroom #2	12'x 12'
Bedroom #3	12'x 13'
Garage	24'x 22'

*Plan Can Be Modified
To Meet Your Needs*

Standard Prairieview Design Features

Double Four Vinyl Siding
Two Cedar Posts - Front Porch
Cedar Trim - Front Windows
Aluminum Fascia & Soffits
Andersen Vinyl Clad Windows
6 Panel Steel Front Door w/ Sidelite
Raised Panel O.H. Garage Door
Overhead Garage Door Opener
6' Sliding Wood Patio Door
450 S.F. Concrete Drive (18 x 25)
40' x 4' Concrete Service Walk
2 x 6 Construction with Tyvek
R-24 Warm Wall System
R-49 Blown Insul. in House Ceiling

Open Concept - Kitchen/Living Room
Open Staircase to Lower Level
Flush Oak Doors and Oak Trim Pkg.
Oakridge Cabinets Throughout
Wall Cabinet/Pole Above Washer/Dryer
Crown Molding-Kitchen & Utility Room
Trash/ Recycling Combo Base Cabinet
Kenmore Quiet Wash Dishwasher
Kenmore Micro-Hood with Venting
Badger 5 Garbage Disposal
Ice Maker Line to Refrigerator
Vanity Size Bathroom Mirrors
Kohler Plumbing Fixtures & Faucets
75 Gallon Natural Gas Water Heater

Interior Painting & Staining
Brick Gas Fireplace / Oak Mantel
High Efficiency Nat. Gas Furnace
Central Air Conditioning
200 Amp Electric Service
\$8600 Floor Covering Allowance
\$1200 Master Tub Tile Allowance
\$1200 Sand Backfill Allowance
\$1200 Light Fixture Allowance
\$1400 Hauling Fill Allowance
\$2200 Plbg. Lateral Allowance
\$700 Gravel Drive Allowance
\$175 Silt Fence Allowance
Std. Features Subject to Change



Werner Homes

4539 South Taylor Drive, Sheboygan 458-4104 wernerhomes@wernerhomes.com

