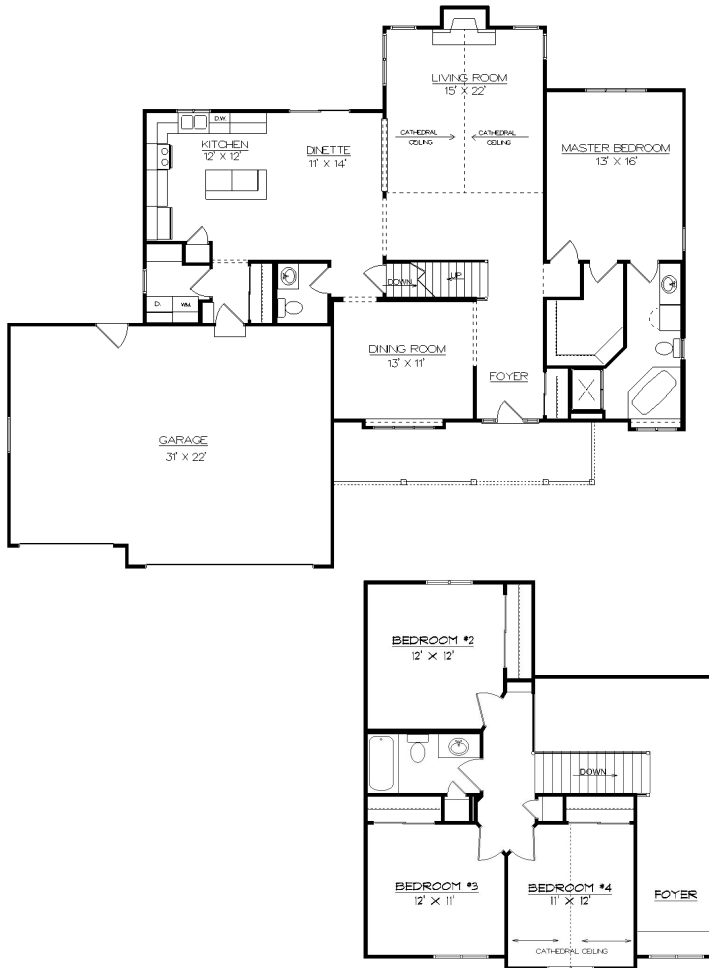




The Regency

STANDARD DESIGN FEATURES



2143 Square Feet

| | | | |
|--------------------|-----------------|--------------------|------------------|
| <i>Living Room</i> | <i>15'x 22'</i> | <i>Master Bdrm</i> | <i>13'x 16'</i> |
| <i>Dining Room</i> | <i>13'x 11'</i> | <i>Bedroom #2</i> | <i>12'x 12'</i> |
| <i>Kitchen</i> | <i>12'x 12'</i> | <i>Bedroom #3</i> | <i>12'x 11'</i> |
| <i>Dinette</i> | <i>11'x 14'</i> | <i>Bedroom #4</i> | <i>11' x 12'</i> |
| <i>Garage</i> | <i>31'x 22'</i> | | |

Four Bedroom – Three Car Design
Double Four Vinyl Siding
Aluminum Fascia & Soffits
Andersen Vinyl Clad Windows
Six Panel Insulated Steel Front Door
Raised Panel Insulated O.H. Garage Door
O.H. Garage Door Opener w/ 2 Remotes
800 SF Concrete Drive
25' x 4' Concrete Service Walk
25' x 5' Concrete Front Stoop
2 x 6 Construction with Tyvek
R-24 Warm Wall System, R-49 Blown Clg.
Brick Fireplace with Oak Mantle
Oak Colonial Stair Spindles & Railing
Custom Oak Bookshelves - 2nd level
Oakridge Cabinets Throughout
Snack Work Island - Kitchen
Wall Cabinets & Countertop in Laundry
Crown Moldings On Wall Cabinets
Garbage Disposal with Connections
Ice Maker Line to Refrigerator
Kenmore Quiet Wash Dishwasher
Kenmore Micro-Hood with Venting
Drywall With Sand Texture Finish
Complete Painting & Staining of Interior
Kohler Plumbing Fixtures & Faucets
Kohler Whirlpool Tub - Master Bath
Kohler Shower Door in Master Bath
65 Gallon Natural Gas Water Heater
High Efficiency Natural Gas Furnace
Central Air Conditioning
200 Amp Electric Service
\$8300 Floor Covering Allowance
\$1200 Master Tub Tile Allowance
\$1200 Light Fixture Allowance
\$2200 Plumbing Lateral Allowance
\$1800 Sand Backfill Allowance
\$1400 Hauling Excess Fill Allowance
\$700 Gravel Base for Drive Allowance
\$175 Silt Fence Allowance

*Std. Features & Price Subject to Change

Werner Homes

4539 South Taylor Drive, Sheboygan 458-4104 wernerhomes@wernerhomes.com