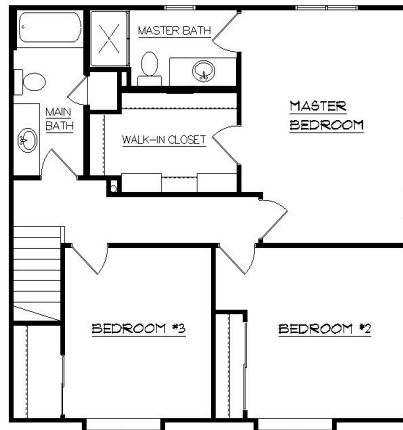


# The Richmond



## STANDARD DESIGN FEATURES

*Double Four Vinyl Siding*  
*Cedar Posts & Railings*  
*Aluminum Fascia & Soffits*  
*Andersen Vinyl Clad Windows*  
*6 Panel Insul. Steel Front Door w/ Sidelite*  
*Raised Panel Insulated O.H. Garage Door*  
*O.H. Garage Door Opener w/ 2 Remotes*  
*6' Sliding Wood Patio Door*  
*450 S.F. Concrete Drive (18 x 25)*  
*10' x 4' Concrete Service Walk*  
*Main Level Laundry*  
*2 x 6 Construction with Tyvek House Wrap*  
*R-24 Warm Wall System*  
*R-49 Blown Insulation in House Ceiling*  
*Flush Oak Doors and Oak Trim Package*  
*Oak Colonial Stair Spindles & Railing*  
*Brick Gas Fireplace with Oak Mantle*  
*Oakridge Cabinets Throughout*  
*Wall Cabinet Above Washer & Hanging Pole*  
*Crown Molding - Kitchen & Utility Cabinet*  
*Trash / Recycling Base Cabinet-Kitchen*  
*Snack Counter - Kitchen*  
*Kenmore Quiet Wash Dishwasher*  
*Garbage Disposal*  
*Kenmore Micro-Hood with Venting*  
*Ice Maker Line to Refrigerator*  
*Vanity Size Bathroom Mirrors*  
*Complete Painting & Staining of Interior*  
*Kohler Plumbing Fixtures & Faucets*  
*Kohler Shower Door in Master Bath*  
*40 Gallon Natural Gas Water Heater*  
*High Efficiency Natural Gas Furnace*  
*Central Air Conditioning*  
*Six Recessed Ceiling Lights*  
*200 Amp Electric Service*  
*\$7900 Floor Covering Allowance*  
*\$1000 Light Fixture Allowance*  
*\$2200 Plumbing Lateral Allowance*  
*\$1400 Sand Backfill Allowance*  
*\$1400 Hauling Excess Fill Allowance*  
*\$700 Gravel Base for Drive Allowance*  
*\$175 Silt Fence Allowance*



### 2041 Square Feet

<i>Living Room</i>	<i>17'x 12'</i>	<i>Master Bdrm</i>	<i>12'x 16'</i>
<i>Kitchen</i>	<i>12'x 14'</i>	<i>Bedroom #2</i>	<i>12'x 12'</i>
<i>Dinette</i>	<i>12'x 12'</i>	<i>Bedroom #3</i>	<i>11'x 12'</i>
<i>Family Room</i>	<i>22'x 14'</i>	<i>Garage</i>	<i>22'x 24'</i>

\*Std. Features & Prices Subject to Change

# Werner Homes

4539 South Taylor Drive, Sheboygan 458-4104 [wernerhomes@wernerhomes.com](mailto:wernerhomes@wernerhomes.com)